

All elements of the vehicle must compulsorily be those of one same recognised model, whether said model is the basic one or one of its variants also recognised (see art. 254) to the exception of elements whereof the addition, the removal or the replacement is explicitly authorised according to the regulations hereafter.

258—Coachwork

Series production touring cars shall have a closed body or a "convertible" body.

Coachwork means all the external parts of the vehicle licked by the air streams and located above a plane passing through the wheel hubs.

Convertible coachwork means a body which can be either completely closed, or open, with inter alia mobile windows in the doors. Is excluded all coachwork fitted with a simple hood offering but a scanty protection against bad weather, even if the hood is equipped with detachable side-screens.

As a rule the body shall be built by the manufacturer of the chassis. However, a series production body manufactured by a coachwork builder approved by the maker of the chassis may be admitted. For cars whose body has been made outside the main factory, there will have to be at least 1,000 units assembled within a period of 12 consecutive months and said cars will be subject to a separate recognition.

259—Number and dimensions of seats

Series Touring cars shall offer the number of seats provided by the manufacturer. This number shall be at least TWO when the engine cylinder capacity is inferior or equal to *1,000 cc., and at least FOUR when the engine cylinder capacity exceeds *1,000 cc. Shall count as seats only those arranged by the coachwork manufacturer to the effect of accommodating passengers and driver. These seats shall have the following minimum dimensions as indicated on sketch below:

(a) is always measured horizontally and parallel to the longitudinal axis of the chassis, between two vertical planes perpendicular to the longitudinal axis and delimiting from front to rear the open space on a level with the height where such measurement is taken.

For a driver seat (a) is measured at floor level, or at the bottom of any recess, from the perpendicular of the nearest pedal at rest.

For a passenger seat (a) is measured at 20 cm. above floor level or the bottom of recesses if need be.

In the case of movable seats their position shall not be altered when measurements are taken.

(b) is measured vertically from the rear end of (a) to the horizontal plane tangent to the highest part of the cushion, as shown on the sketch.

(c) is measured in the horizontal plane defined above from the upper

*Becomes 700 c.c. at 1st January, 1965.

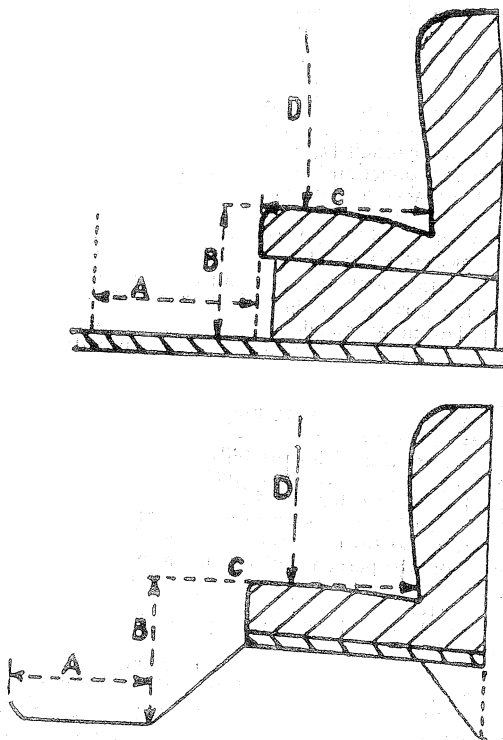
end of (b), parallel to (a) and in the centre of each seat, as far as the vertical plane perpendicular to the longitudinal axis of the chassis and tangent to the foremost point of the back of the seat.

Backs of seats have a minimum height of 30 cm. measured vertically from the rear end of (c).

The coachwork must be planned in order to obtain:

(a)+(b)+(c)=1.10 m. minimum.

The minimum width for foot space for each person shall be 25 cm. measured perpendicularly to the longitudinal axis of the chassis.



Shall not be recognised as four-seaters, cars comprising inside the coachwork 2 normal seats and a back space fitted for the transport of dogs or luggage, even if the dimensions of said space enable the occasional transport of passengers.

**On the other hand, vehicles equipped with a coachwork of the coupé type, with a cylinder-capacity exceeding 700 cc. and offering only two seats will nevertheless be admitted as series-production Touring cars provided they meet with the following conditions:

***Becomes effective 1st January, 1965.

- (a) with regard to the chassis and mechanical parts they shall be perfectly identical to a series-production recognised four-seater model.
- (b) they shall have at least the same weight.
- (c) at least 1,000 units of the model must have been built in twelve consecutive months.

260—Minimum Weight

The official weight of a car shall be entered on the recognition form of the considered model. This weight shall be obtained by taking the average of the actual weighing results of 5 closed cars of the same model, selected at random and weighed in the following conditions: with the spare wheel provided by the manufacturer and with a tyre which is the same as those mounted on at least two wheels of the vehicle, with full oil tank, and full water tank (if such is the case), but without fuel, tools, luggage or anyone aboard, less a tolerance of 3 per cent.

261—Changes and additions authorised

No modifications and/or additions may be brought to a vehicle as it is supplied by the manufacturer and described on the Recognition Form, whether they affect mechanical parts, material or aspect, internally as well as externally, beside those authorised under the present article.

Any modification and/or addition not explicitly authorised under the present article would entail the assignment of the car to another of the following groups—according to the nature and importance of modifications and/or additions—as defined in the present regulations, or its exclusion from the event, should there not be an applicable group in the supplementary regulations of the competition.

Any change and/or addition not specifically authorised by these regulations shall be drawn attention to in writing by the entrant under pain of exclusion or higher penalty in the case of wilful misrepresentation.

The changes and/or additions authorised are:

(1) **Lighting devices:** make and number are free, provided they comply with the International Convention on Road Traffic.

(2) **Radiators and fuel tanks:** any radiator or fuel tank provided by the manufacturer for the model considered and mentioned in the maintenance booklet and on the recognition form may be used.

The use of radiators having a capacity superior to that of those provided by the manufacturer may be authorised by the A.C.N. in the case of events in special climatic conditions. The addition of a radiator screen whether fixed or mobile, regardless of its system of control, is authorised. The location of all fuel or water pipes is free.

The location and type of filling port for a fuel tank are free even if a change in type and location entails a new aperture in the coachwork. In